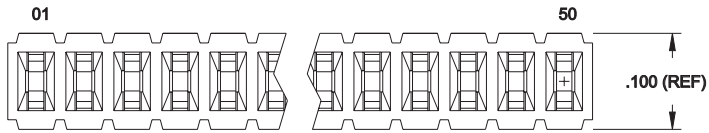
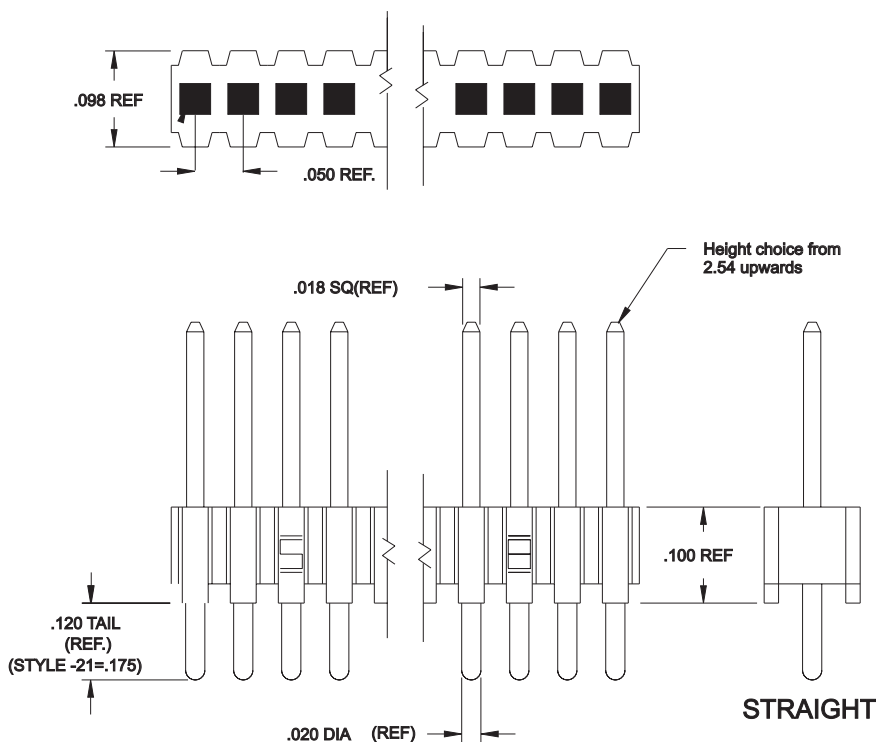
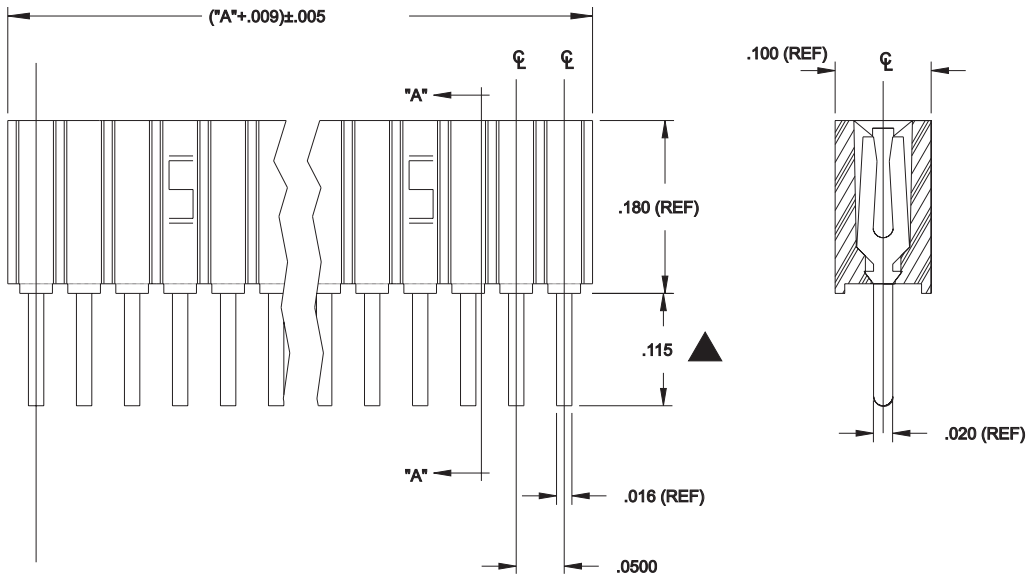


Carrier and How to Use It

Page 1



Samtec SLM Socket



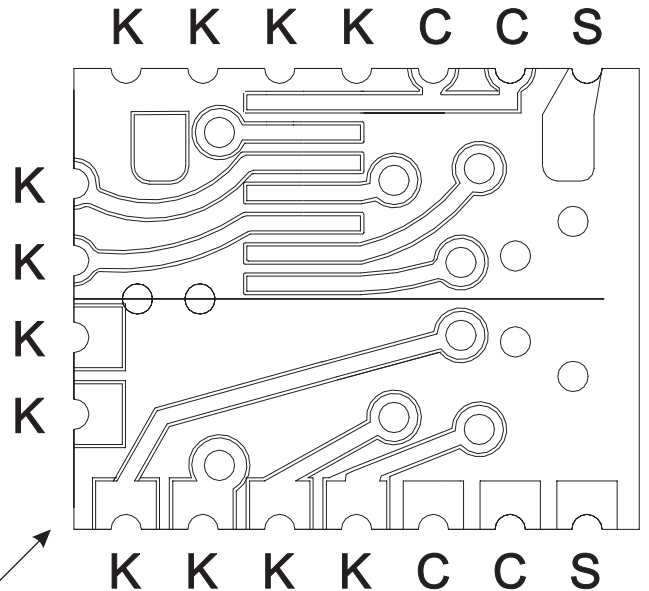
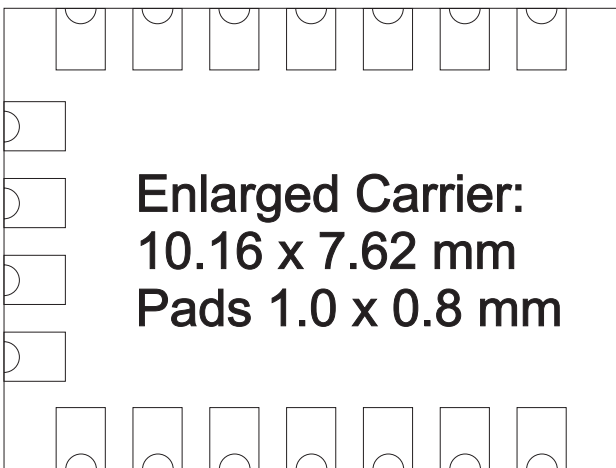
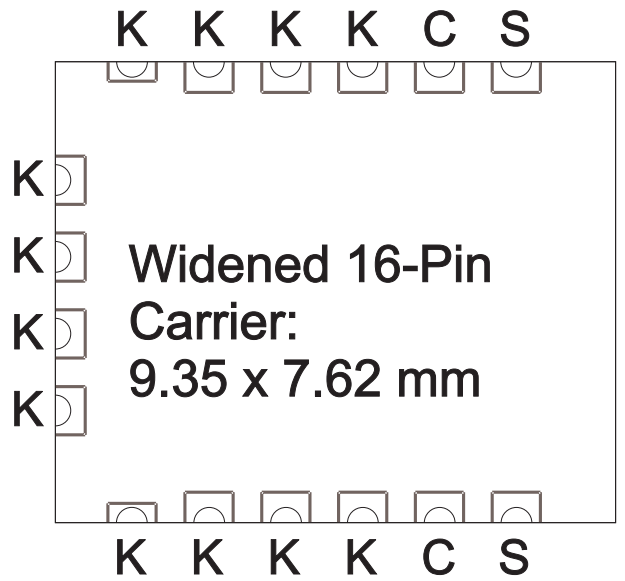
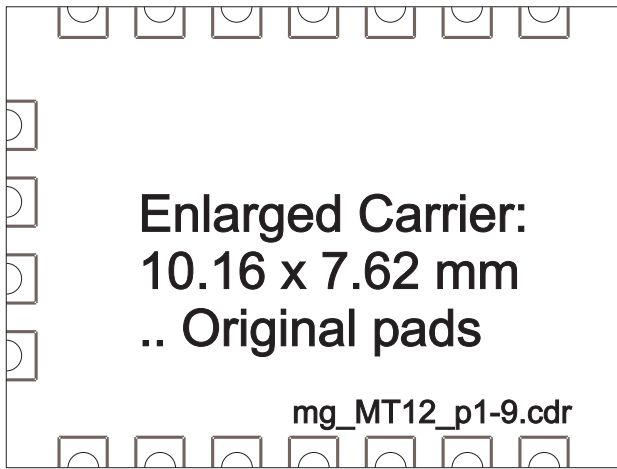
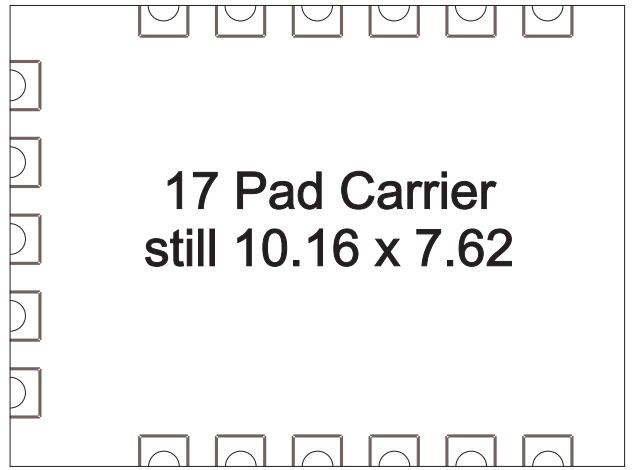
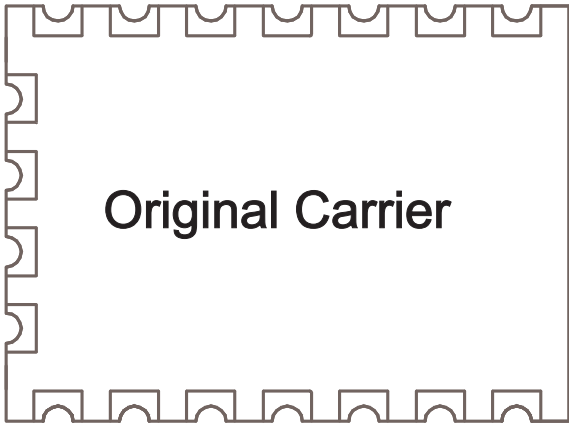
Samtec TMS Header

Note: 1 Inch = 25.4 mm
(Sorry, that's the way the drawings were on the WEB)

Samtec
Connectors

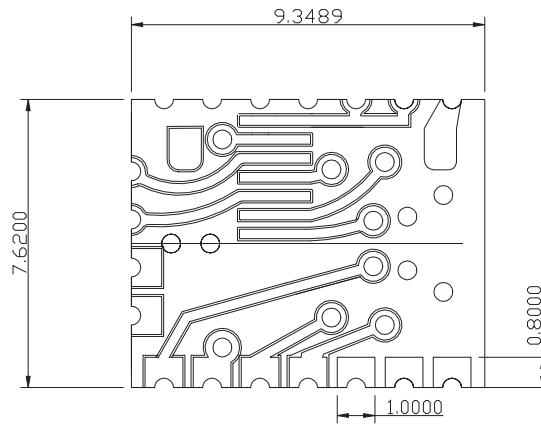
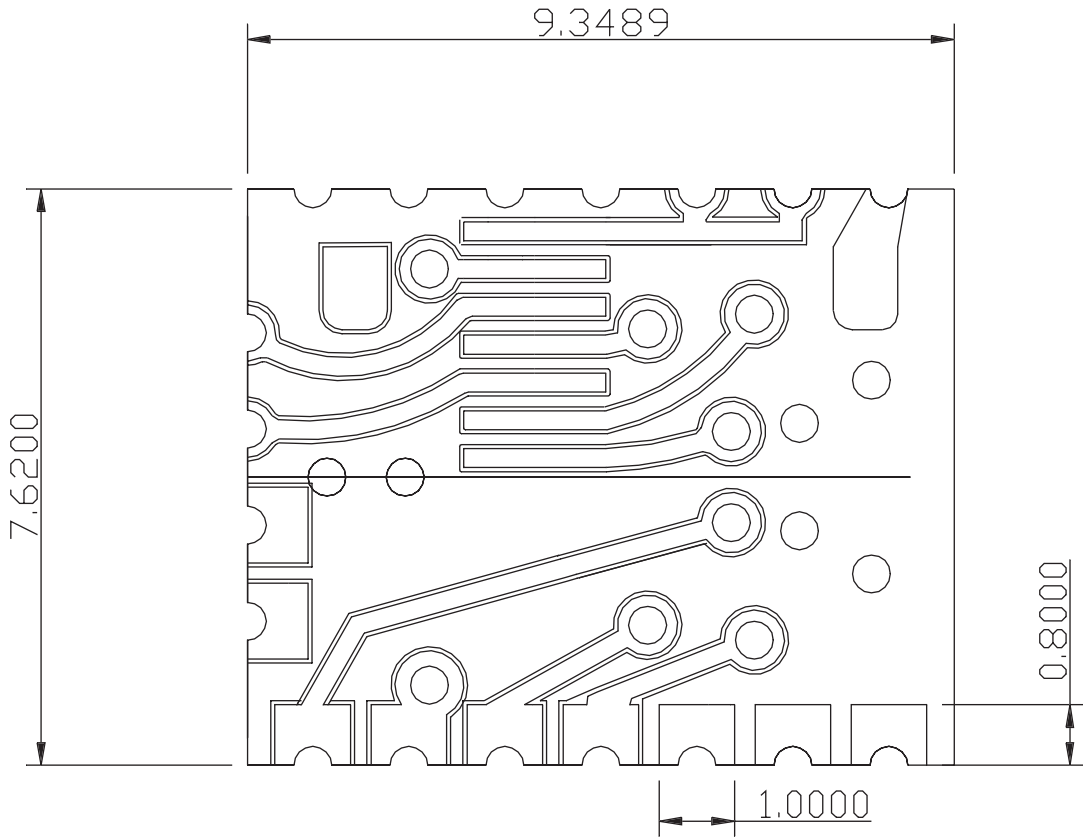
Page 2

SCTWk_Feb99.cdr
MJG 16-Feb-1999



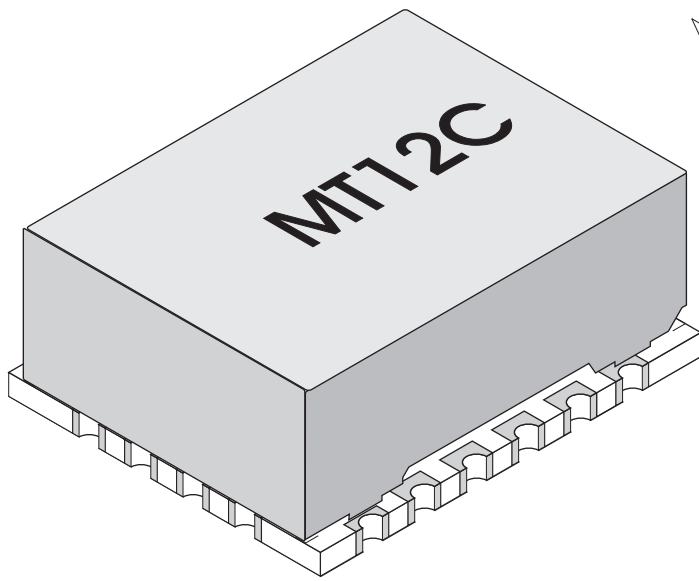
**Suggested
Alternative Carriers**

Page 3

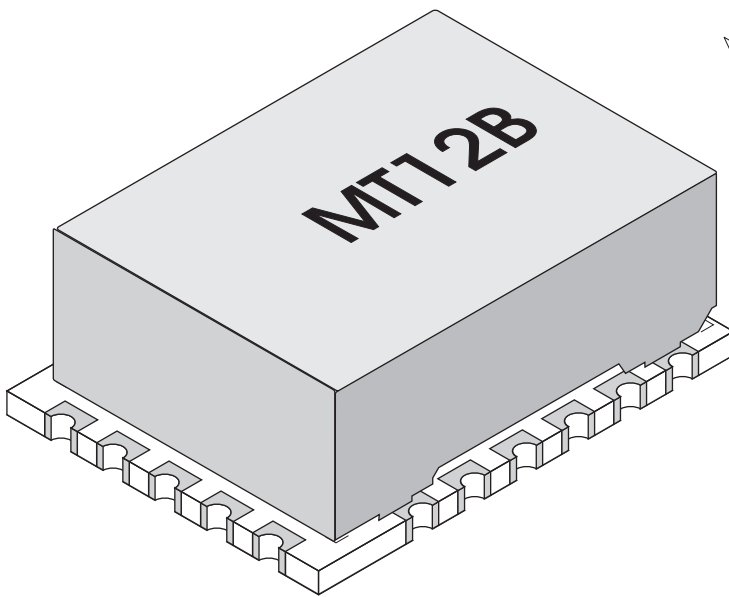


Latest Carrier
From Mitel
16-Feb-1999

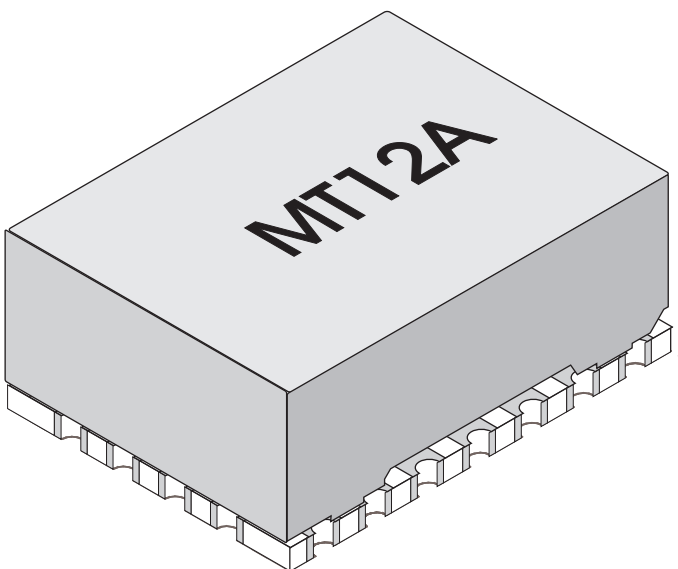
Page 4



Fibre Ribbon



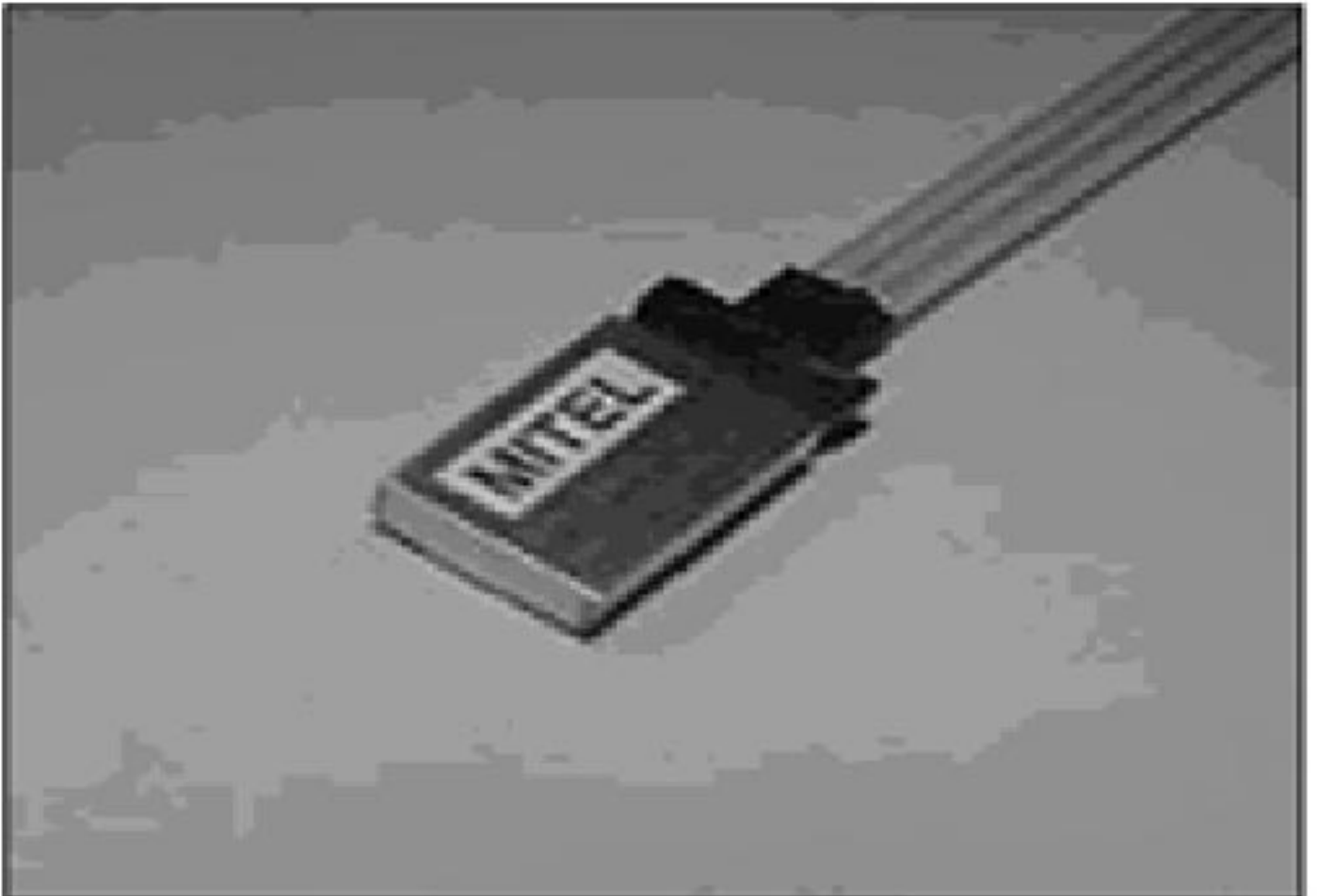
Fibre Ribbon



Fibre Ribbon

**MT12 Assembly
.. 3 versions**

Page 5



Mitel 4D469
Quad VCSEL
Array

Page 6