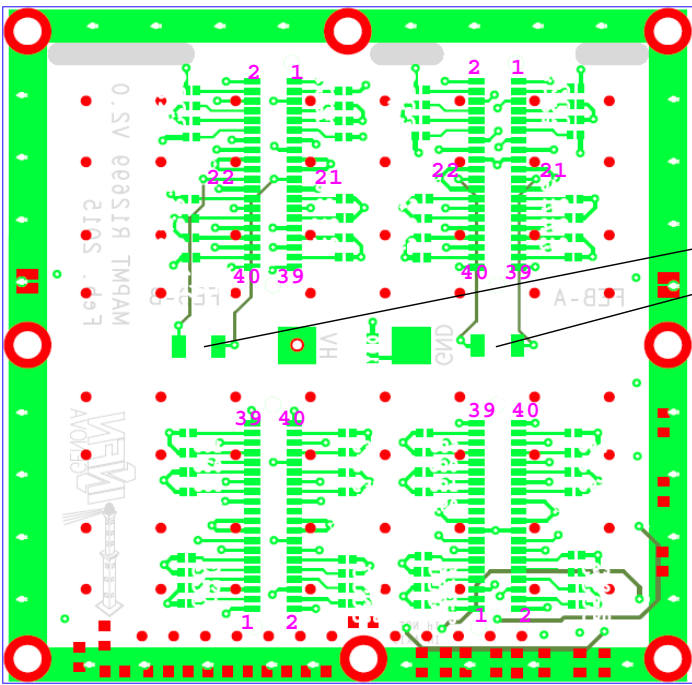


J1

J2

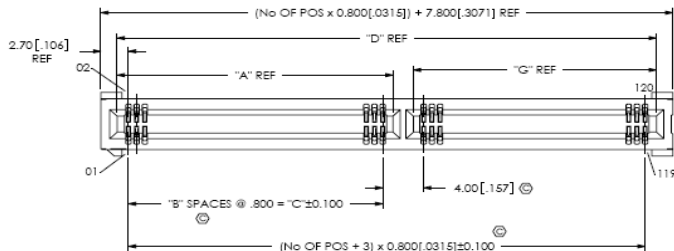
BASEBOARD (VIEW FROM PMT SIDE)



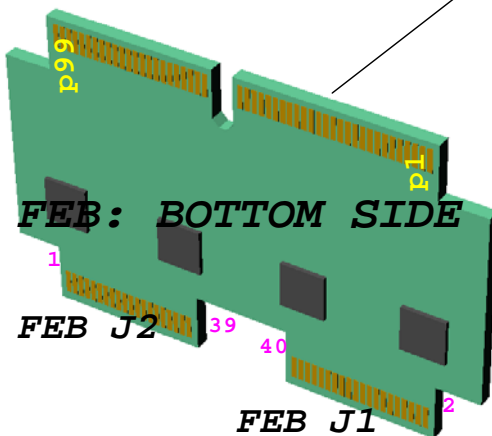
PT1000_A
PT1000_B

J4

J3



HSEC8_150_01_L_DV_A_K



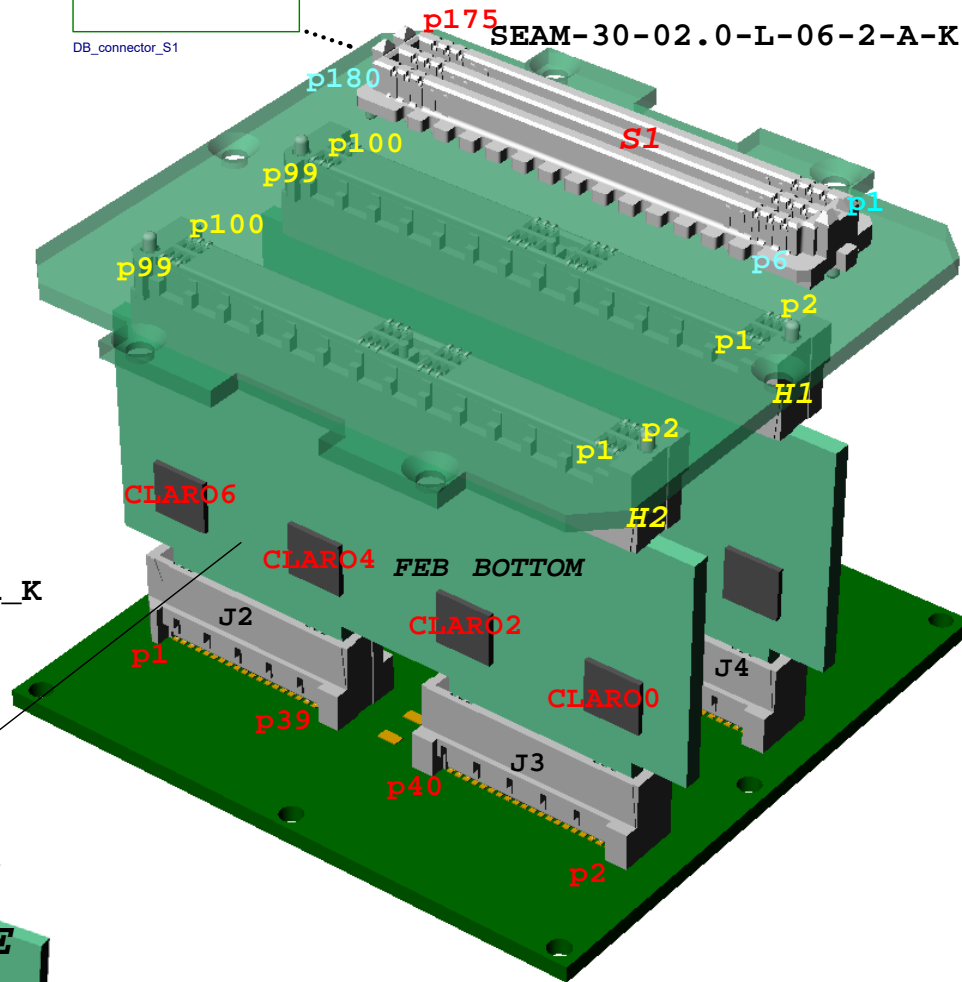
FEB: BOTTOM SIDE

FEB J2

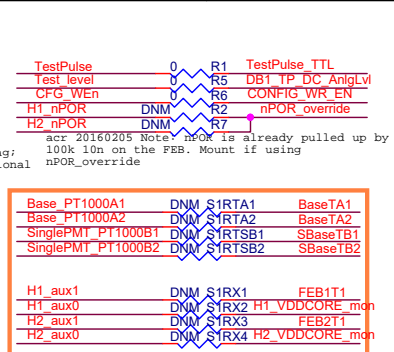
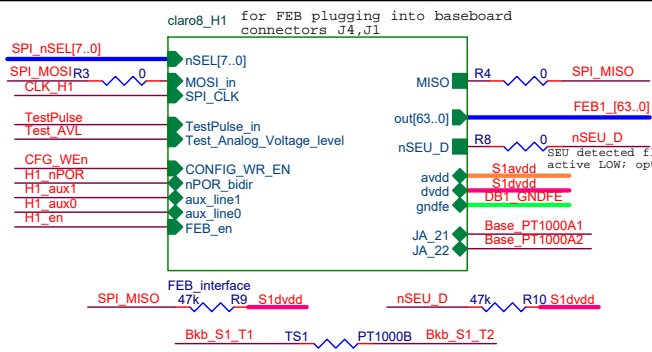
FEB J1

DB_IFC1

DB_connector_S1



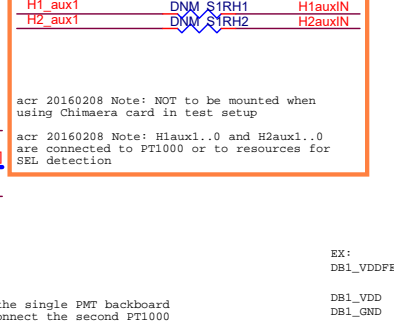
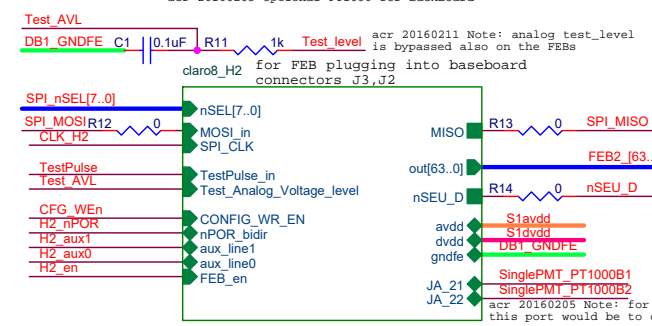
INFN-Ferrara / INFN Milano-Bicocca		
Title Photo Detector Module's backboard designer: Angelo Cotta Ramusino		
Size B	Document Number BB_singlePMT_main	Rev 2.0
Date: Monday, February 29, 2016	Sheet 1 of 4	



FEB1_2	1	S1A
FEB1_4	7	
FEB1_6	13	
FEB1_8	19	
FEB1_10	25	
FEB1_12	31	
FEB1_14	37	
FEB1_16	43	
FEB1_18	49	
FEB1_20	55	
FEB1_22	61	
FEB1_24	67	
FEB1_26	73	
FEB1_28	79	
FEB1_30	85	
FEB1_32	91	
FEB1_34	97	
FEB1_36	103	
FEB1_38	109	
FEB1_40	115	
FEB1_42	121	
FEB1_44	127	
FEB1_46	133	
FEB1_48	139	
FEB1_50	145	
FEB1_52	151	
FEB1_54	157	
FEB1_56	163	
FEB1_58	169	
FEB1_60	175	

FEB1_3	2	S1B
FEB1_5	8	
FEB1_7	14	
FEB1_9	20	
FEB1_11	26	
FEB1_13	32	
FEB1_15	38	
FEB1_17	44	
FEB1_19	50	
FEB1_21	56	
FEB1_23	62	
FEB1_25	68	
FEB1_27	74	
FEB1_29	80	
FEB1_31	86	
FEB1_33	92	
FEB1_35	98	
FEB1_37	104	
FEB1_39	110	
FEB1_41	116	
FEB1_43	122	
FEB1_45	128	
FEB1_47	134	
FEB1_49	140	
FEB1_51	146	
FEB1_53	152	
FEB1_55	158	
FEB1_57	164	
FEB1_59	170	
FEB1_61	176	

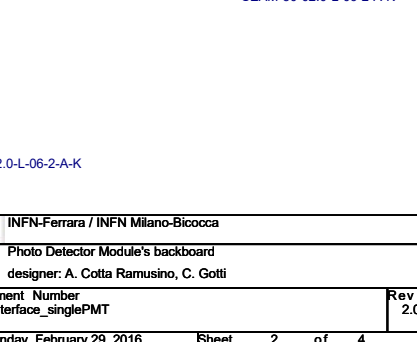
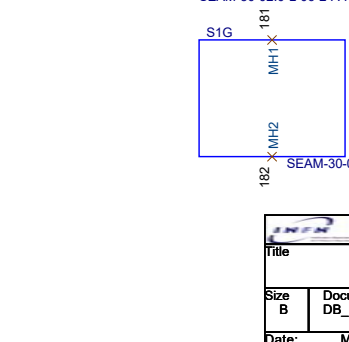
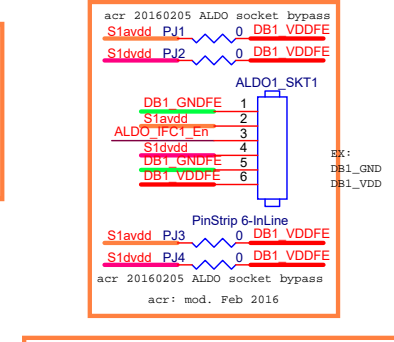
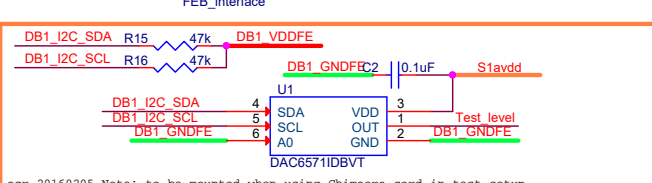
FEB1_1	3	S1C
FEB1_0	9	
DB1_GNDFE	15	
SPI_MISO	21	
nSEU_D	27	
Bkb_S1_T1	33	
CONFIG_WR_EN	39	
BaseTA1	45	
SBaseTB1	51	
DB1_GNDFE	57	
nPOR_override	63	
SPI_CLK	69	
SPI_MOSI	75	
DB1_GNDFE	81	
DB1_I2C_SDA	87	
DB1_I2C_SCL	93	
DB1_GNDFE	99	
H1_en	105	
H2_en	111	
DB1_GNDFE	117	
DB1_GNDFE	123	
FEB1T1	129	
FEB2T1	135	
H1auxIN	141	
DB1_VDDFE	147	
TestPulse_TTL	153	
ALDO_IFC1_En	159	
DB1_GNDFE	165	
FEB1_62	171	
FEB1_63	177	



FEB2_1	4	S1D
FEB2_0	10	
DB1_GNDFE	16	
DB1_TP_DC_AnlgLv	22	
Bkb_S1_T2	28	
BaseTA2	34	
SBaseTB2	40	
DB1_GNDFE	46	
SPI_nSEL0	52	
SPI_nSEL1	58	
SPI_nSEL2	64	
SPI_nSEL3	70	
SPI_nSEL4	76	
SPI_nSEL5	82	
SPI_nSEL6	88	
SPI_nSEL7	94	
SPI_nSEL8	100	
SPI_nSEL9	106	
SPI_nSEL10	112	
DB1_GNDFE	118	
DB1_VDDFE	124	
H1_VDDCORE_mon	130	
H2_VDDCORE_mon	136	
H2auxIN	142	
DB1_VDDFE	148	
DB1_GNDFE	154	
DB1_GNDFE	160	
FEB2_62	166	
FEB2_63	172	
FEB2_63	178	

FEB2_2	5	S1E
FEB2_4	11	
FEB2_6	17	
FEB2_8	23	
FEB2_10	29	
FEB2_12	35	
FEB2_14	41	
FEB2_16	47	
FEB2_18	53	
FEB2_20	59	
FEB2_22	65	
FEB2_24	71	
FEB2_26	77	
FEB2_28	83	
FEB2_30	89	
FEB2_32	95	
FEB2_34	101	
FEB2_36	107	
FEB2_38	113	
FEB2_40	119	
FEB2_42	125	
FEB2_44	131	
FEB2_46	137	
FEB2_48	143	
FEB2_50	149	
FEB2_52	155	
FEB2_54	161	
FEB2_56	167	
FEB2_58	173	
FEB2_60	179	

FEB2_3	6	S1F
FEB2_5	12	
FEB2_7	18	
FEB2_9	24	
FEB2_11	30	
FEB2_13	36	
FEB2_15	42	
FEB2_17	48	
FEB2_19	54	
FEB2_21	60	
FEB2_23	66	
FEB2_25	72	
FEB2_27	78	
FEB2_29	84	
FEB2_31	90	
FEB2_33	96	
FEB2_35	102	
FEB2_37	108	
FEB2_39	114	
FEB2_41	120	
FEB2_43	126	
FEB2_45	132	
FEB2_47	138	
FEB2_49	144	
FEB2_51	150	
FEB2_53	156	
FEB2_55	162	
FEB2_57	168	
FEB2_59	174	
FEB2_61	180	

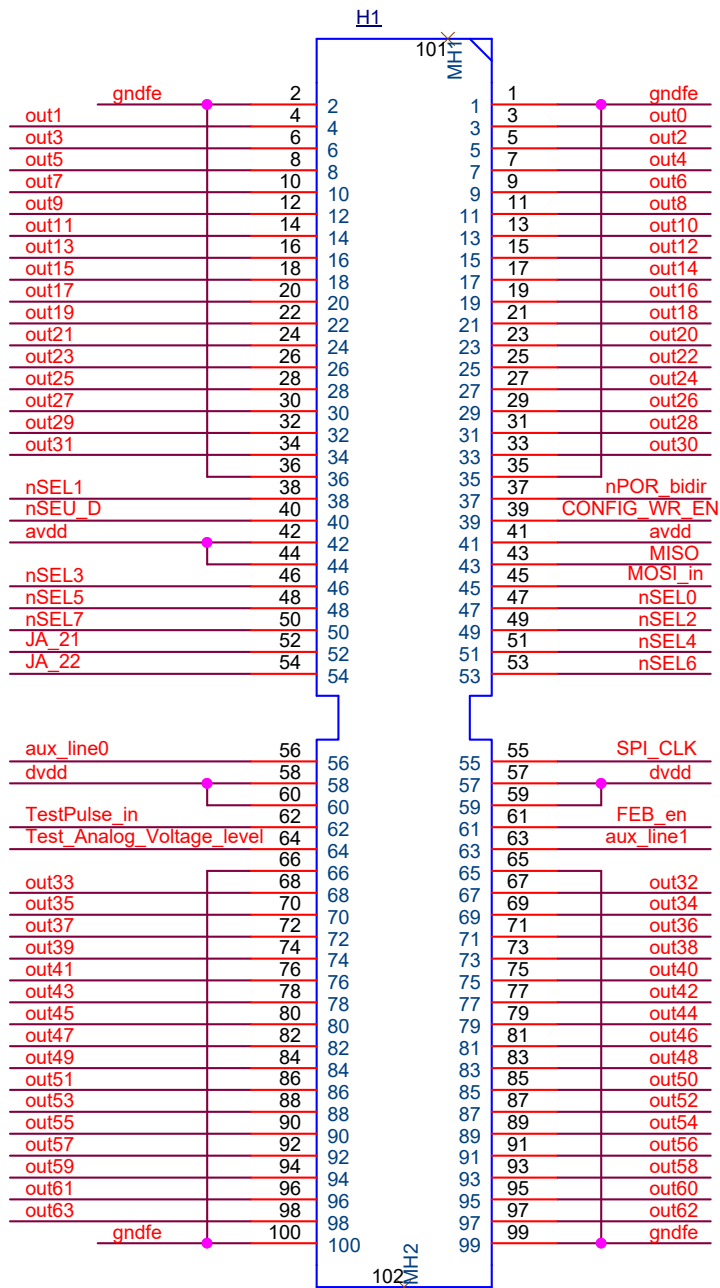


INFN-Ferrara / INFN Milano-Bicocca

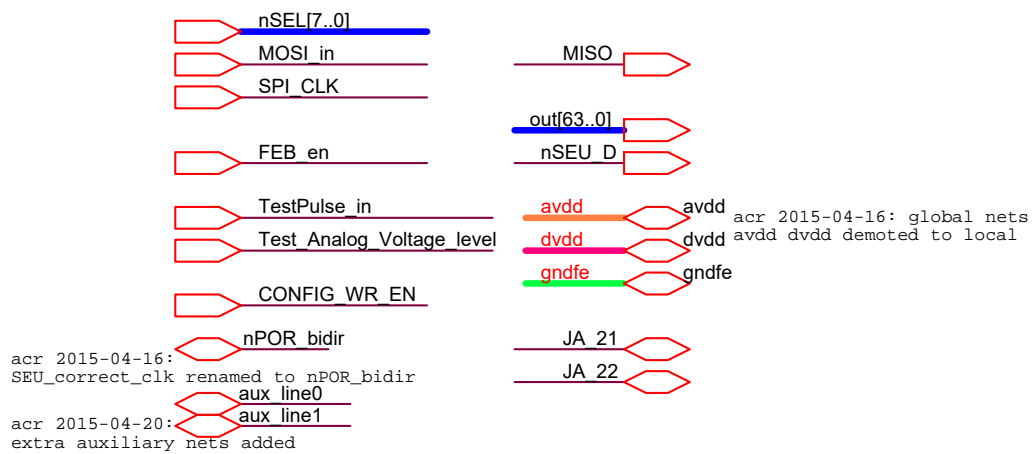
Title: Photo Detector Module's backboard
 designer: A. Cotta Ramusino, C. Gotti

Size B Document Number DB_Interface_singlePMT Rev 2.0

Date: Monday, February 29, 2016 Sheet 2 of 4




HSEC8_150_01_L_DV_A_K

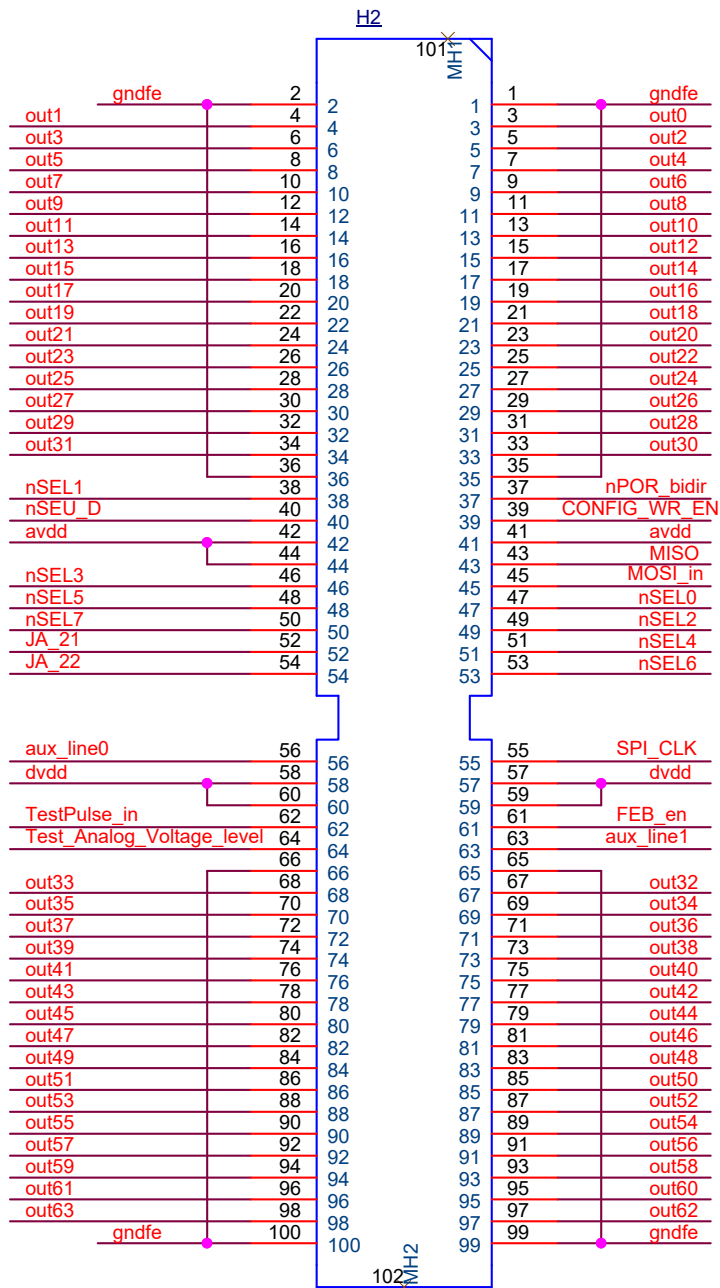


N.B.:

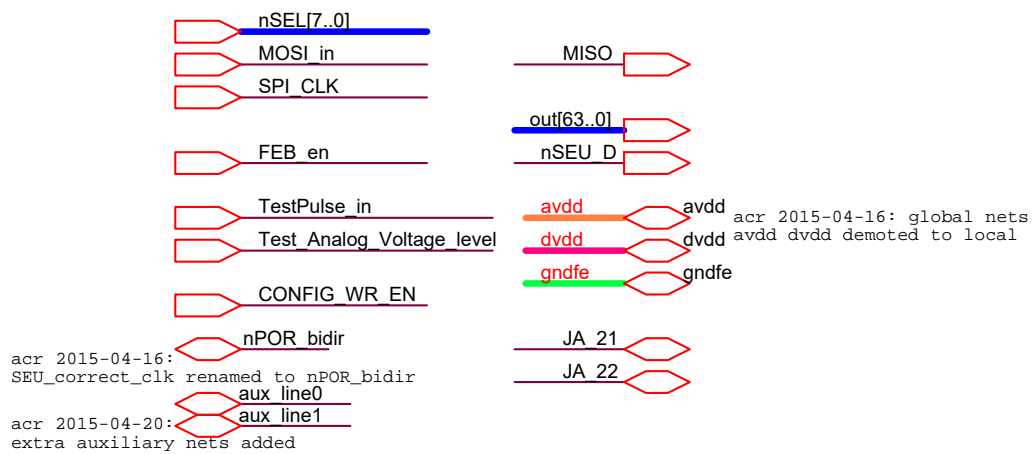
- 1) in this version the nSEL[7..0] lines from the GBT-SCA are routed to the nSEL input of the 8 CLAROS and a single "FEB_en" signal is routed to all the "CHAIN_ENABLE" input of the CLAROS
- 2) the "aux_line1..0" could be used to connect a PT1000 located on the FEB unless needed for power down control

history of mods:
 acr 20160105 renamed:
 * SEU_D to nSEU_D
 * Chain_En[7..0] to nSEL[7..0]
 * nSEL_in to FEB_en

 INFN-Ferrara / INFN Milano-Bicocca	
Title Photo Detector Module's backboard designer: Angelo Cotta Ramusino	
Size A	Document Number backboard_to_FEB_interface
Date: Monday, February 29, 2016	
Sheet 3	of 4
Rev 2.0	




HSEC8_150_01_L_DV_A_K



N.B.:

- 1) in this version the nSEL[7..0] lines from the GBT-SCA are routed to the nSEL input of the 8 CLAROS and a single "FEB_en" signal is routed to all the "CHAIN_ENABLE" input of the CLAROS
- 2) the "aux_line1..0" could be used to connect a PT1000 located on the FEB unless needed for power down control

history of mods:
 acr 20160105 renamed:
 * SEU_D to nSEU_D
 * Chain_En[7..0] to nSEL[7..0]
 * nSEL_in to FEB_en

 INFN-Ferrara / INFN Milano-Bicocca	
Title Photo Detector Module's backboard designer: Angelo Cotta Ramusino	
Size A	Document Number backboard_to_FEB_interface
Date: Monday, February 29, 2016	Rev 2.0 Sheet 4 of 4