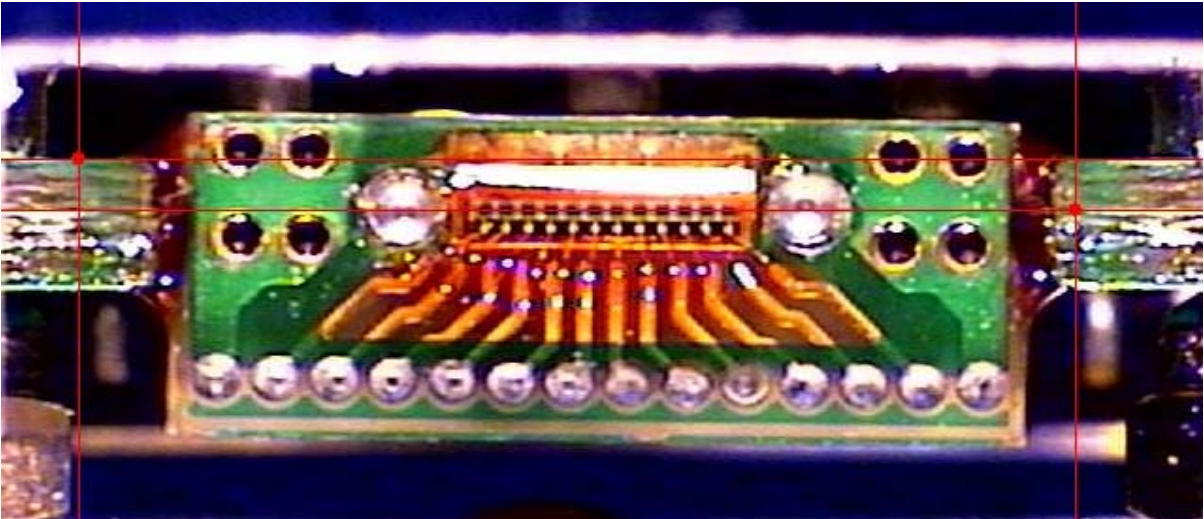


Results of pin measurements on G series Opto Plugins

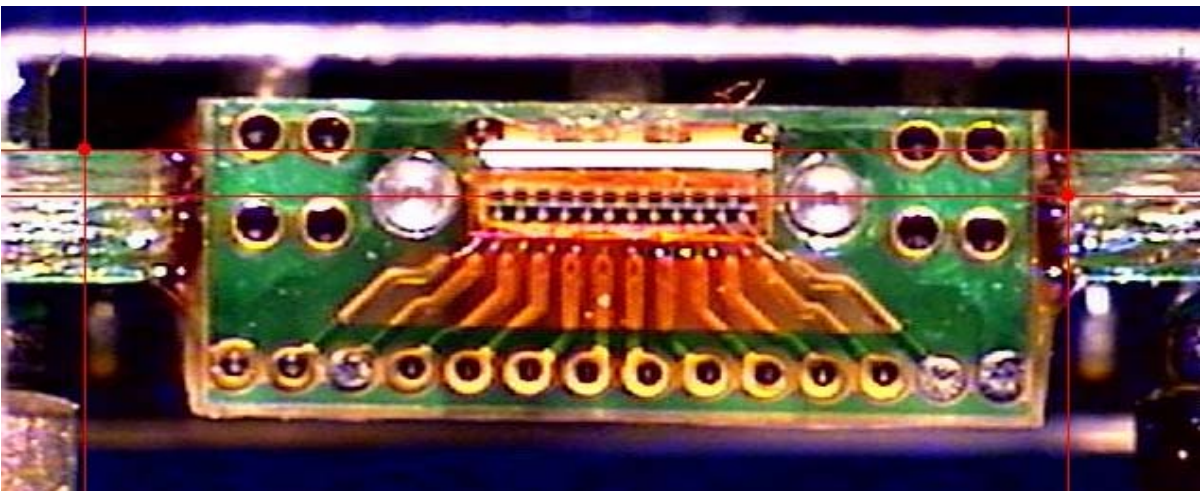
Serial Number	left pin	mid-array	right pin	Comments	Accept?
SR031	0.55	0.59	0.57		Y
SR032	0.65	0.70	0.76		Y
SR033	0.57	0.57	0.57	SR031 - SR034 have notched pins see photo	N
SR034	0.65	0.63	0.68		Y
SR035	0.53	0.57	0.63		N
SR036	0.59	0.59	0.65		Y
SR037	0.57	0.61	0.65		Y
SR038	0.63	0.59	0.61		Y
SR039	0.53	0.57	0.65		N
SR040	0.65	0.63	0.63		Y
SR041	0.61	0.61	0.72		Y
SR042	0.61	0.59	0.61		Y
SR043	0.57	0.59	0.65		Y
SR044	0.59	0.63	0.63		Y
SR045	0.65	0.61	0.57	see photo	Y
SR046	0.63	0.61	0.63		Y
SR047	0.63	0.65	0.65		Y
SR048	0.65	0.61	0.63		Y
SR049	0.76	0.72	0.74		Y
SR050	0.61	0.61	0.65		Y
SR051	0.57	0.59	0.61		Y
SR052	0.63	0.63	0.74		Y
SR053	0.74	0.65	0.65		Y
SR054	0.76	0.72	0.82		Y
SR055	0.65	0.63	0.63		Y
SR056	0.65	0.61	0.63		Y
SR057	0.72	0.63	0.59		Y
SR058	0.63	0.61	0.68		Y
SR059	0.59	0.59	0.61		Y
SR060	0.74	0.72	0.80		Y
SR061	0.59	0.59	0.65		Y
SR062	0.70	0.65	0.78		Y
SR063	0.78	0.68	0.72		Y
SR064	0.65	0.63	0.76		Y
SR065	0.68	0.65	0.70		Y
SR066	0.63	0.59	0.63		Y
SR067	0.68	0.65	0.70		Y
SR068	0.68	0.68	0.70		Y
SR069	0.72	0.68	0.72		Y
SR070	0.65	0.59	0.57		Y
SR071	0.61	0.59	0.61		Y
SR072	0.63	0.61	0.65		Y
SR073	0.70	0.65	0.68		Y
SR074	0.63	0.61	0.65		Y
SR075	0.63	0.63	0.65		Y
SR076	0.68	0.68	0.78		Y
SR077	0.55	0.55	0.59	see photo	N
SR078	0.68	0.61	0.61		Y

ST023	0.76	0.80	0.74		Y
ST024	0.59	0.68	0.65		Y
ST025	0.59	0.68	0.65		Y
ST026	0.57	0.57	0.61		N
ST027	0.72	0.72	0.78		Y
ST028	0.84	0.82	0.89	see photo	Y
ST029	0.65	0.72	0.65		Y
ST030	0.70	0.78	0.72		Y
ST031	0.63	0.68	0.61		Y
ST032	0.72	0.76	0.59		Y
ST033	0.68	0.74	0.70		Y
ST034	0.72	0.76	0.74		Y
ST035	0.65	0.68	0.63		Y
ST036	0.63	0.74	0.65		Y
ST037				Plugin wouldn't seat because of epoxy see photo	N
ST038	0.68	0.70	0.72		Y
ST039	0.68	0.72	0.68		Y
ST040	0.61	0.72	0.65		Y

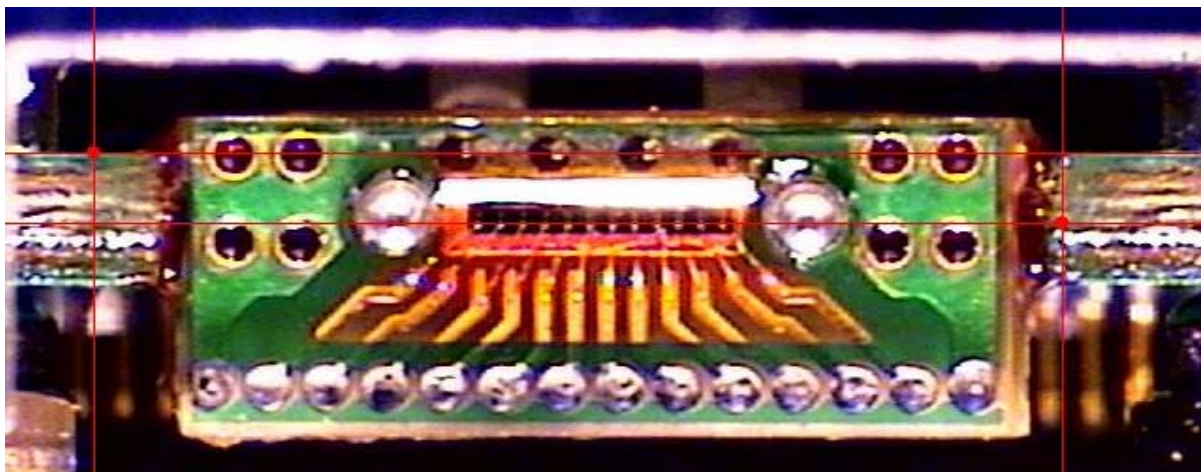
Mean	0.65	0.65	0.67
Std Deviation	0.06	0.06	0.07
Min	0.53	0.55	0.57
Max	0.84	0.82	0.89



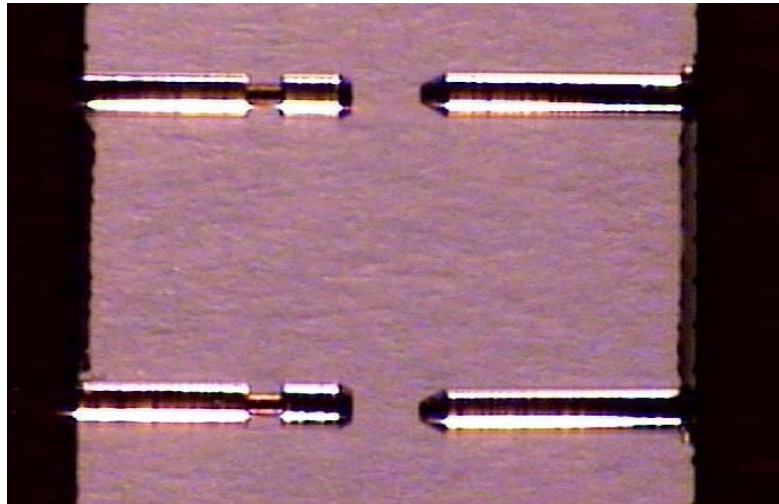
SR045 - twisted pins?



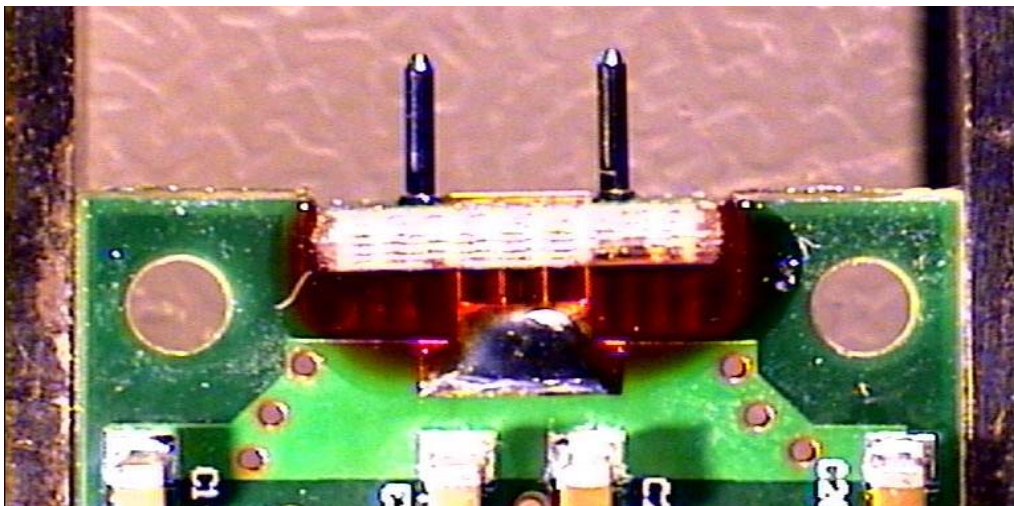
SR077 - left pin 0.55mm, right pin 0.59mm



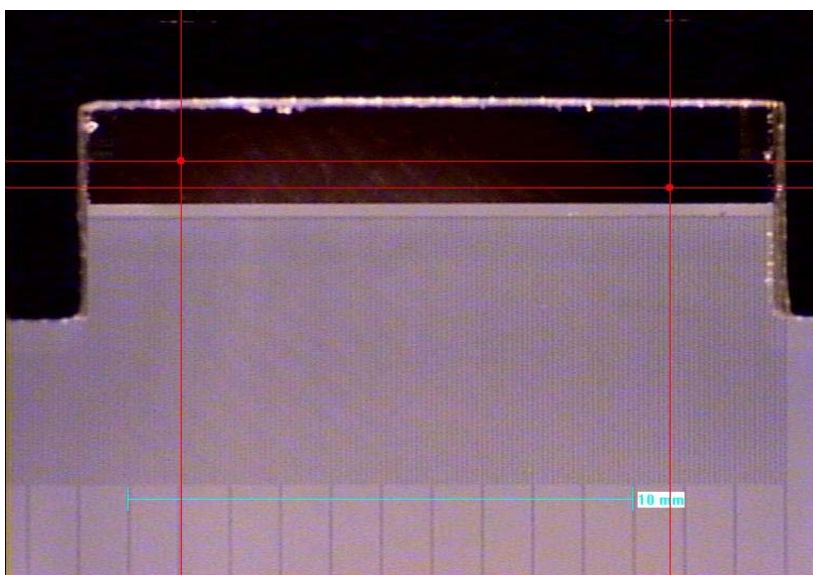
ST028 - left pin 0.84mm, right pin 0.89mm



SR031-SR034 have notched pins, other plugins smooth pins



ST037 - epoxy too close to mounting hole



calibration